

VANN

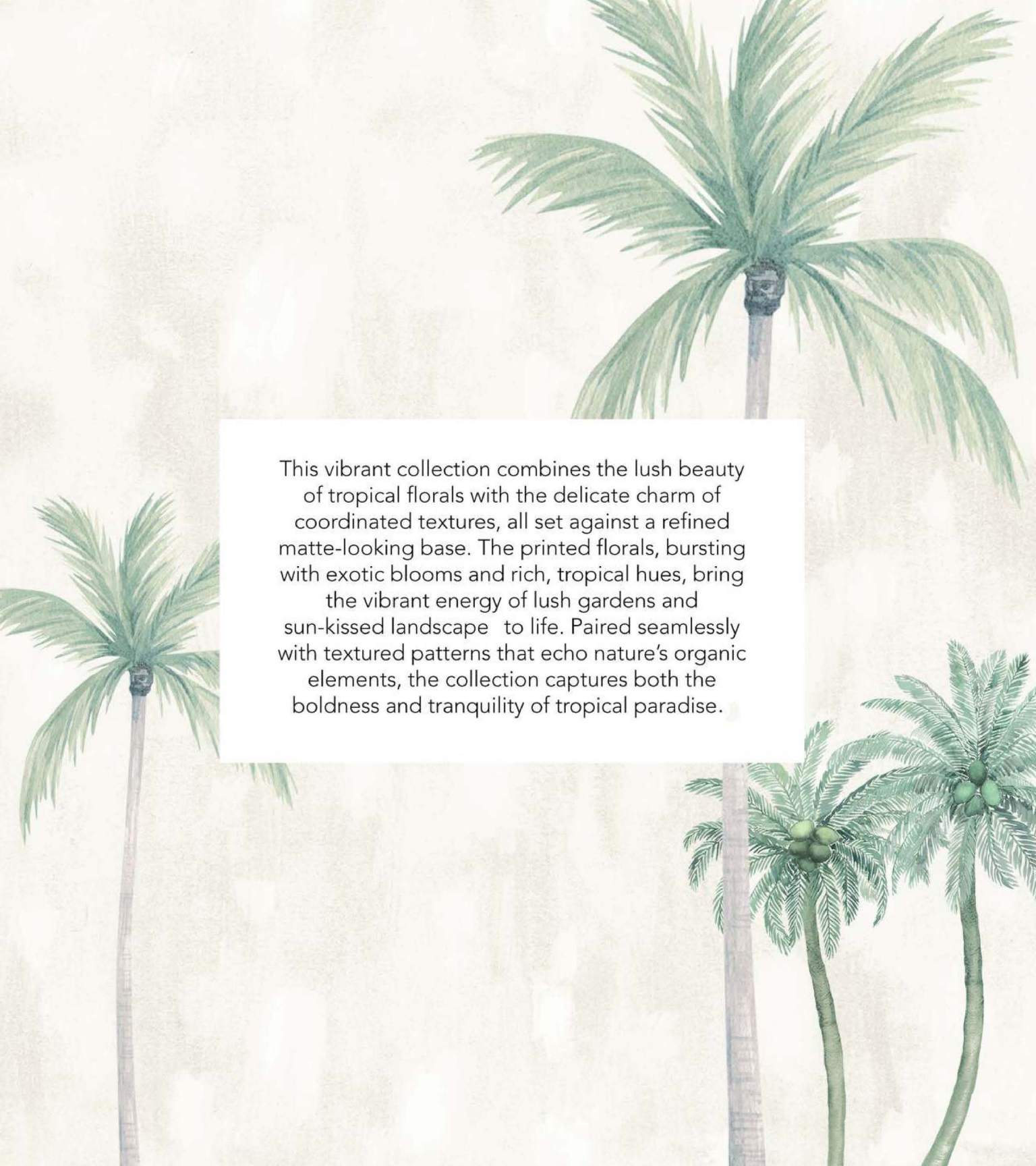

Eliteliving

— FABRICS FOR HOME —

by

marshalls

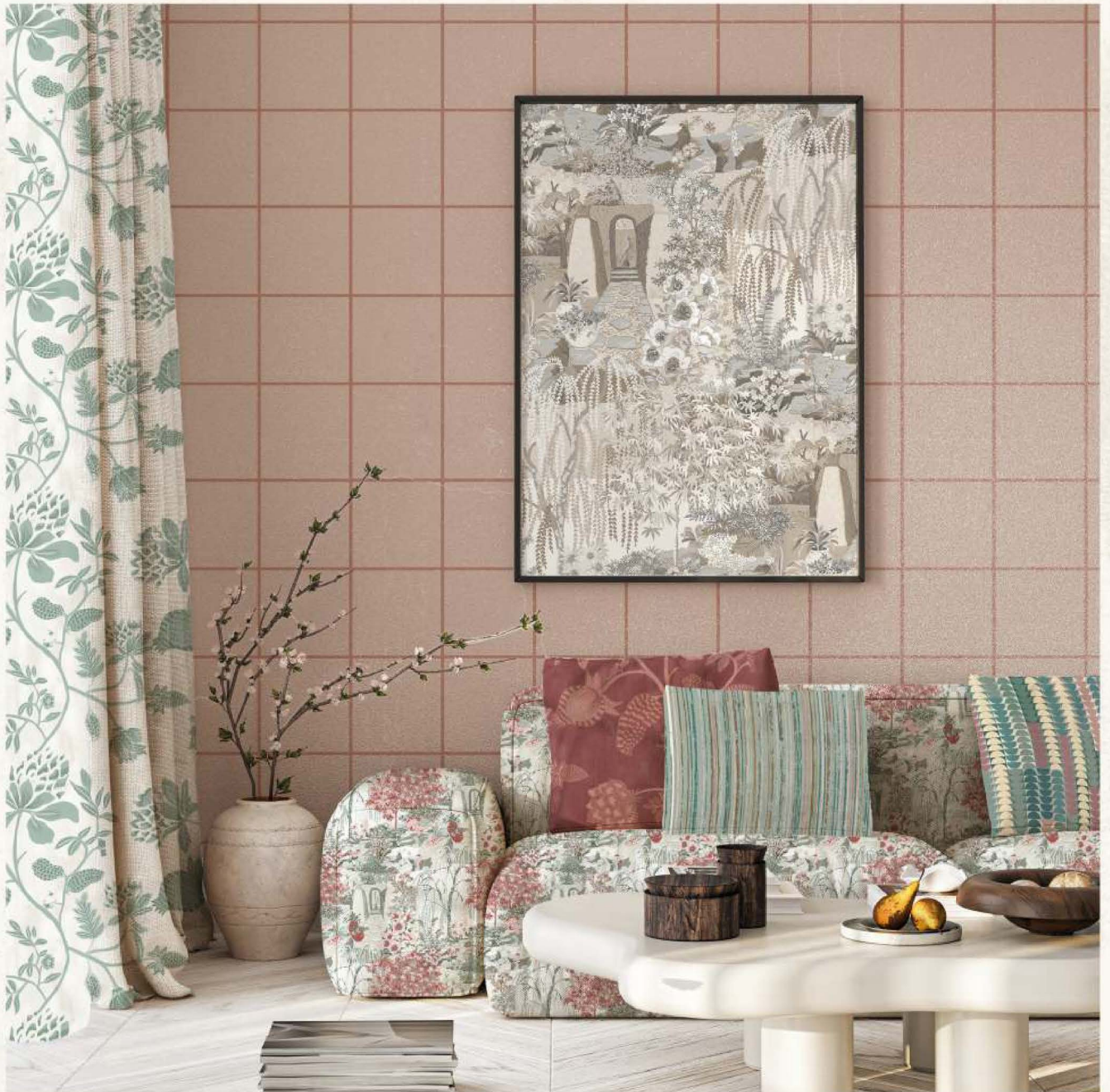


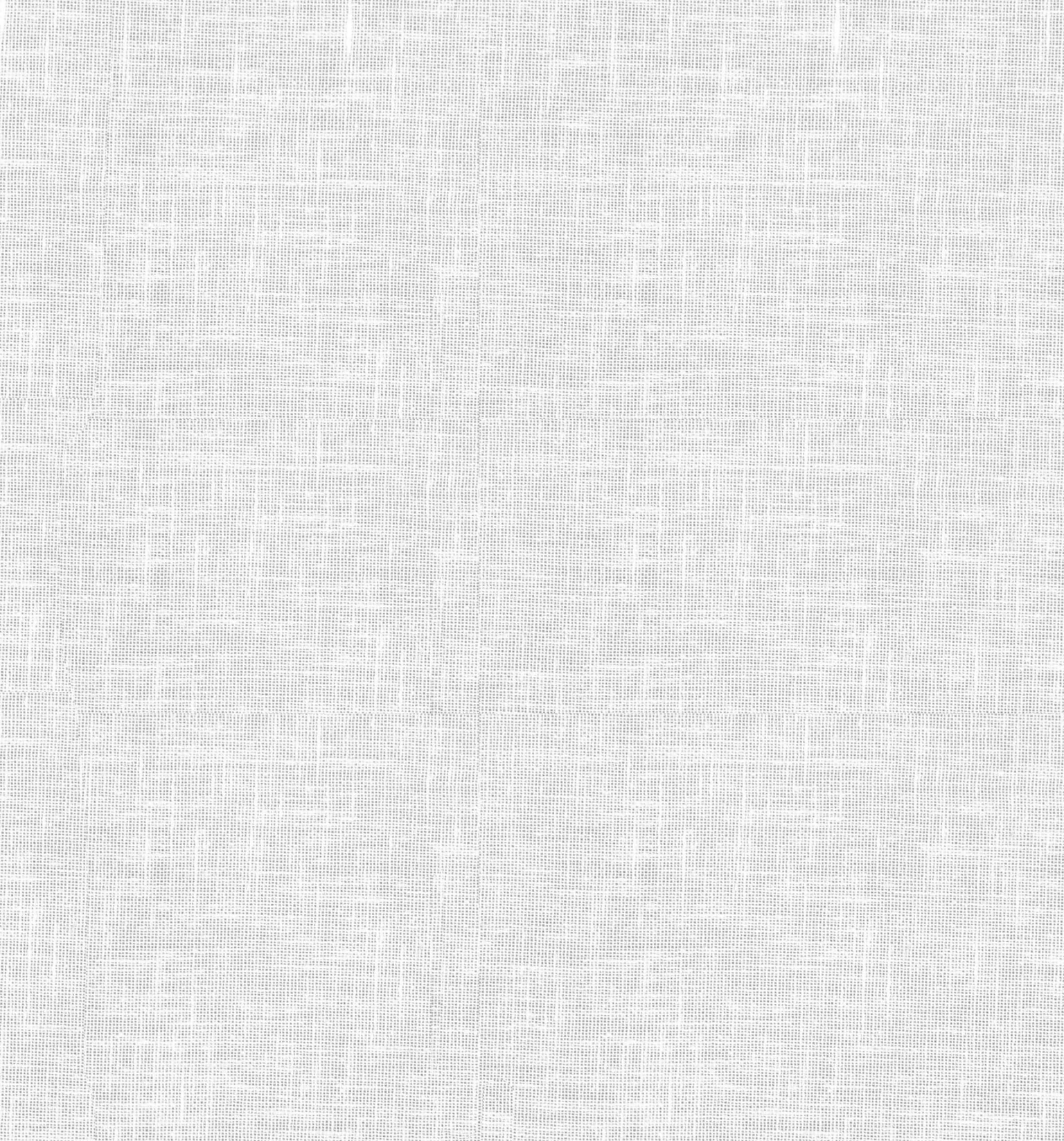
The background is a light beige, textured surface. There are four palm trees: one large one in the top right, one medium one on the left, and two smaller ones in the bottom right. The palm fronds are painted in various shades of green, from light to dark. The trunks are thin and brownish. The overall style is soft and artistic, typical of watercolor painting.

This vibrant collection combines the lush beauty of tropical florals with the delicate charm of coordinated textures, all set against a refined matte-looking base. The printed florals, bursting with exotic blooms and rich, tropical hues, bring the vibrant energy of lush gardens and sun-kissed landscape to life. Paired seamlessly with textured patterns that echo nature's organic elements, the collection captures both the boldness and tranquility of tropical paradise.

ARCADIA

This intricate design evokes the charm of a lush, timeless garden with an enchanting, classic aesthetic. It features a layered composition of foliage, floral arrangements, and delicate trees, harmonizing natural textures and muted earthy tones. Central to the design is a stone pathway leading through an arched garden entrance, inviting the viewer into a serene landscape of cascading willow trees, climbing vines, and blooming flowers.





SRSHTI EKAM

WIDTH
300 CMS (118")

WEIGHT
125 GSM

COMPOSITION
70%POLY. 30%COTT.

SRE : 06

END USE
CURTAIN,UPHOLSTERY

CARE INSTRUCTION
Ⓟ

Page : 01

TISSUE

Colour may vary from dye lot to dye lot



SRSHTI EKAM

WIDTH
140 CMS (54")

WEIGHT
355 GSM

COMPOSITION
100% POLYESTER

END USE
CURTAIN, UPHOLSTERY

CARE INSTRUCTION
Ⓟ

SRE : 11

Page : 02

HEMP

Colour may vary from dye lot to dye lot



SRSHTI EKAM

WIDTH
140 CMS (54")

WEIGHT
355 GSM

COMPOSITION
60%POLY. 30%COTT. 10% LIN.

SRE : 26

END USE
CURTAIN,UPHOLSTERY

CARE INSTRUCTION
Ⓟ

Page : 03

KHADI

Colour may vary from dye lot to dye lot



VANN

WIDTH
140 CMS (54")

WEIGHT
218 GSM

COMPOSITION
60%POLY. 30%COTT. 10% LIN.

VAN : 01

END USE
CURTAIN,UPHOLSTERY

CARE INSTRUCTION
Ⓟ

Page : 04

PALM

Colour may vary from dye lot to dye lot



VANN

WIDTH
140 CMS (54")

WEIGHT
218 GSM

COMPOSITION
60%POLY. 30%COTT. 10% LIN.

VAN : 02

END USE
CURTAIN,UPHOLSTERY

CARE INSTRUCTION
Ⓟ

Page : 05

PALM

Colour may vary from dye lot to dye lot



VANN

WIDTH
140 CMS (54")

WEIGHT
315 GSM

COMPOSITION
100% POLYESTER

VAN : 03

END USE
CURTAIN, UPHOLSTERY

CARE INSTRUCTION
Ⓟ

Page : 06

ARCADIA

Colour may vary from dye lot to dye lot



VANN

WIDTH
140 CMS (54")

WEIGHT
351 GSM

COMPOSITION
100% POLYESTER

VAN : 04

END USE
CURTAIN, UPHOLSTERY

CARE INSTRUCTION
Ⓟ

Page : 07

HORIZON

Colour may vary from dye lot to dye lot



VANN

WIDTH
140 CMS (54")

WEIGHT
315 GSM

COMPOSITION
100% POLYESTER

VAN : 05

END USE
CURTAIN, UPHOLSTERY

CARE INSTRUCTION
Ⓟ

Page : 08

ARCADIA

Colour may vary from dye lot to dye lot

PALM

This serene and tropical design features a sprawling landscape of palm trees and desert-like sand dunes. The palm trees, with their gently swaying fronds and slender trunks, are rendered in soft, natural hues of greens, browns, and muted golds. Delicate shrubbery and desert foliage dot the scene, adding depth and texture to the composition.





VANN

WIDTH
140 CMS (54")

WEIGHT
351 GSM

COMPOSITION
100% POLYESTER

VAN : 06

END USE
CURTAIN, UPHOLSTERY

CARE INSTRUCTION
Ⓟ

Page : 09

HORIZON

Colour may vary from dye lot to dye lot



SRSHTI

WIDTH
140 CMS (54")

WEIGHT
351 GSM

COMPOSITION
100% POLYESTER

END USE
CURTAIN, UPHOLSTERY

CARE INSTRUCTION
Ⓟ

SRS : 25

Page : 10

WOOL

Colour may vary from dye lot to dye lot



VANN

WIDTH
140 CMS (54")

WEIGHT
450 GSM

COMPOSITION
100% POLYESTER

END USE
CURTAIN, UPHOLSTERY

CARE INSTRUCTION
Ⓟ

VAN : 07

Page : 11

ORCHARD

Colour may vary from dye lot to dye lot



VANN

WIDTH
140 CMS (54")

WEIGHT
218 GSM

COMPOSITION
60%POLY. 30%COTT. 10% LIN.

VAN : 08

END USE
CURTAIN, UPHOLSTERY

CARE INSTRUCTION
Ⓟ

Page : 12

PALM

Colour may vary from dye lot to dye lot



VANN

WIDTH
140 CMS (54")

WEIGHT
315 GSM

COMPOSITION
100% POLYESTER

VAN : 09

END USE
CURTAIN, UPHOLSTERY

CARE INSTRUCTION
Ⓟ

Page : 13

ARCADIA

Colour may vary from dye lot to dye lot



VANN

WIDTH
140 CMS (54")

WEIGHT
351 GSM

COMPOSITION
100% POLYESTER

VAN : 10

END USE
CURTAIN, UPHOLSTERY

CARE INSTRUCTION
Ⓟ

Page : 14

HORIZON

Colour may vary from dye lot to dye lot



VANN

WIDTH
140 CMS (54")

WEIGHT
351 GSM

COMPOSITION
100% POLYESTER

VAN : 11

END USE
CURTAIN, UPHOLSTERY

CARE INSTRUCTION
Ⓟ

Page : 15

HORIZON

Colour may vary from dye lot to dye lot



VANN

WIDTH
140 CMS (54")

WEIGHT
450 GSM

COMPOSITION
100% POLYESTER

VAN : 12

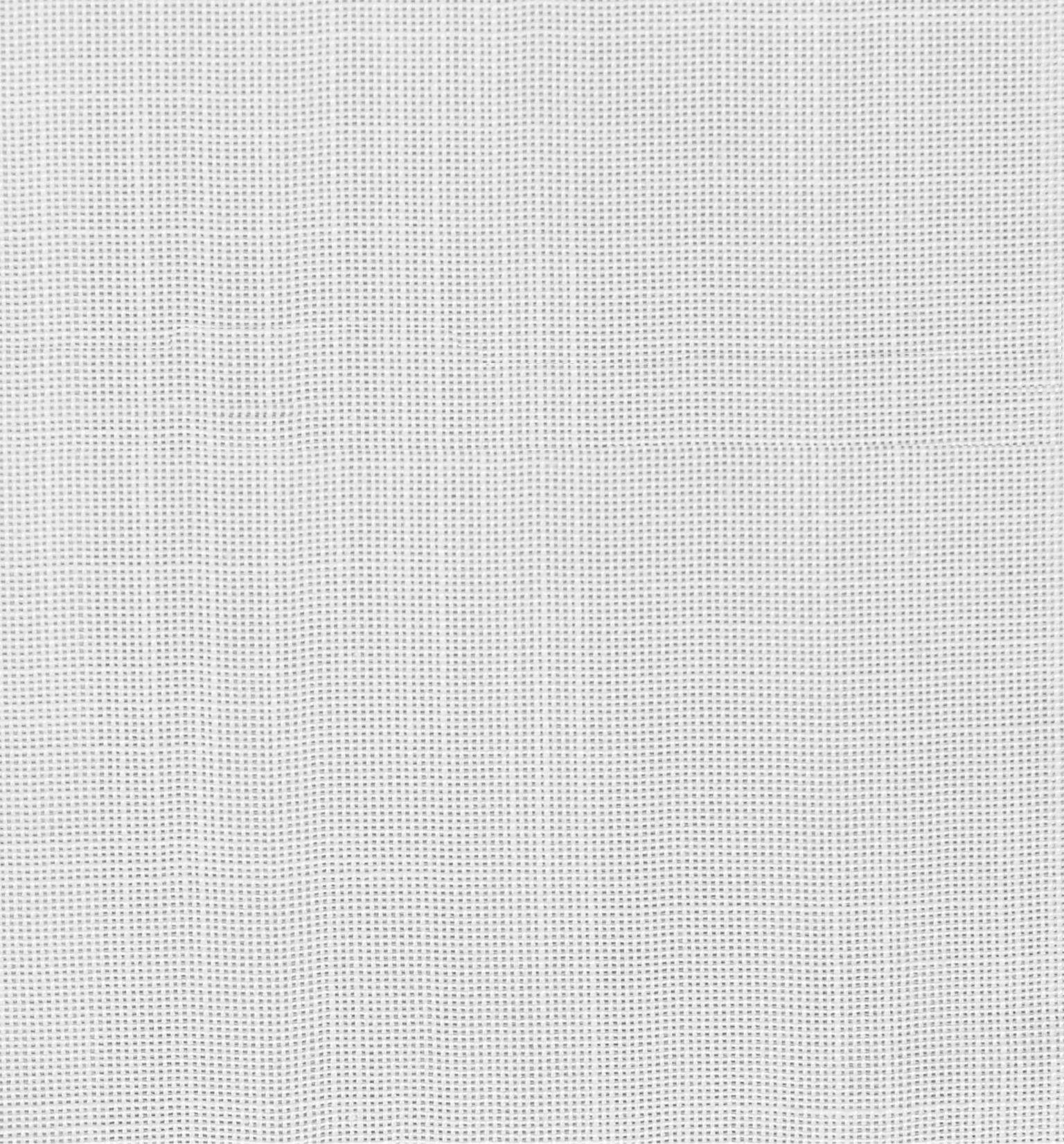
END USE
CURTAIN, UPHOLSTERY

CARE INSTRUCTION
Ⓟ

Page : 16

ORCHARD

Colour may vary from dye lot to dye lot



SRSHTI

WIDTH
300 CMS (118")

WEIGHT
177 GSM

COMPOSITION
100% POLYESTER

SRS : 30

END USE
CURTAIN, UPHOLSTERY

CARE INSTRUCTION
Ⓟ

Page : 17

MIRAGE

Colour may vary from dye lot to dye lot

SRSHTI EKAM

WIDTH
140 CMS (54")

WEIGHT
218 GSM

COMPOSITION
60%POLY. 30%COTT. 10% LIN.

SRE : 01

END USE
CURTAIN,UPHOLSTERY

CARE INSTRUCTION
Ⓟ

Page : 18

KHADI



SRSHTI

WIDTH
140 CMS (54")

WEIGHT
335 GSM

COMPOSITION
100% POLYESTER

END USE
CURTAIN, UPHOLSTERY

CARE INSTRUCTION
Ⓟ

SRS : 12

Page : 19

CAREMERE

Colour may vary from dye lot to dye lot



VANN

WIDTH
140 CMS (54")

WEIGHT
218 GSM

COMPOSITION
60%POLY. 30%COTT. 10% LIN.

VAN : 13

END USE
CURTAIN, UPHOLSTERY

CARE INSTRUCTION
Ⓟ

Page : 20

PALM

Colour may vary from dye lot to dye lot



VANN

WIDTH
140 CMS (54")

WEIGHT
218 GSM

COMPOSITION
60%POLY. 30%COTT. 10% LIN.

VAN : 14

END USE
CURTAIN,UPHOLSTERY

CARE INSTRUCTION
Ⓟ

Page : 21

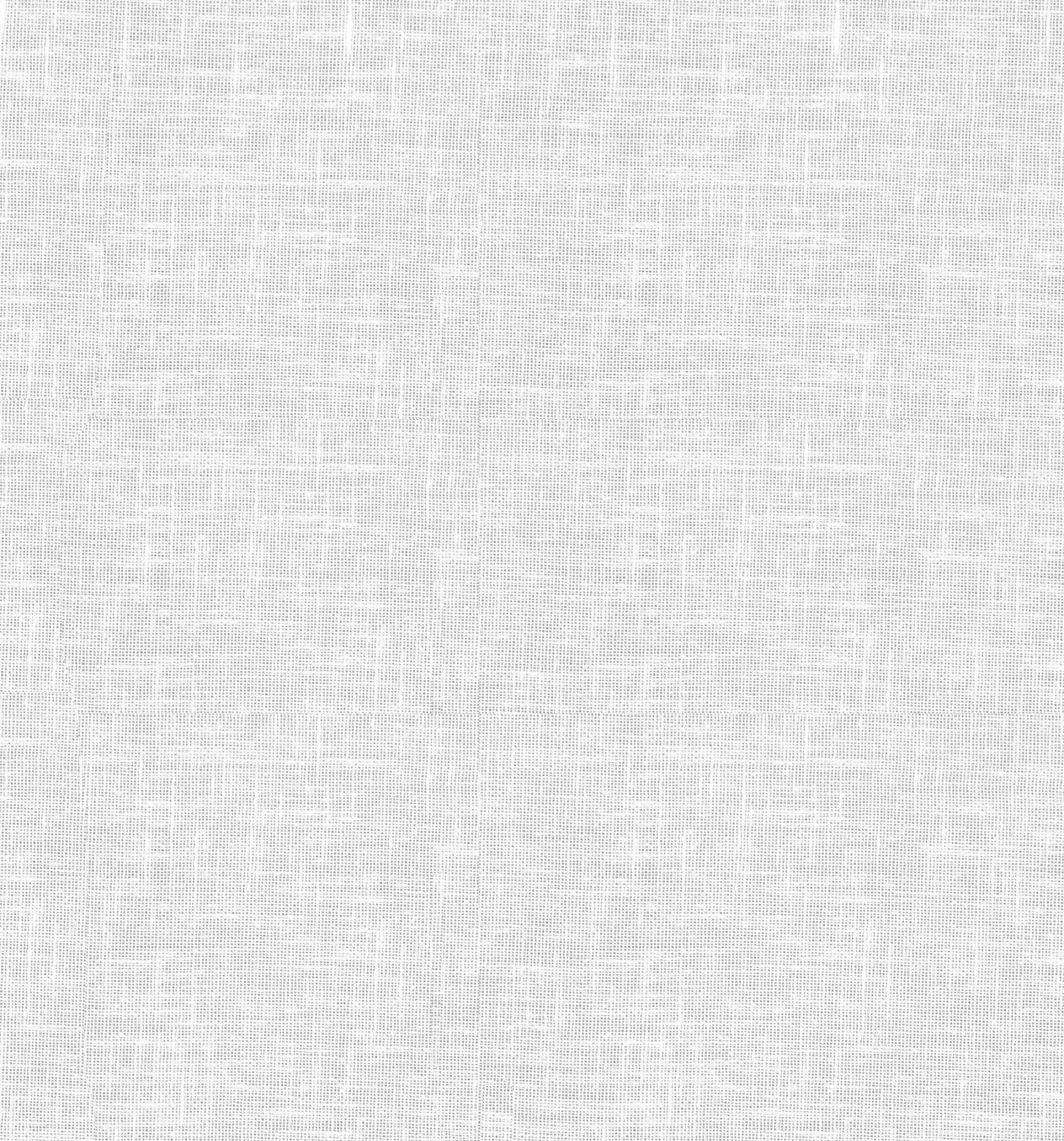
PALM

Colour may vary from dye lot to dye lot



VERDANT

This design showcases a textured, vertical stripe pattern with an earthy, distressed aesthetic. The irregular, worn effect gives the stripes a dynamic and organic appearance, as if weathered over time. The color palette is composed of warm, neutral tones, including soft terracottas, sandy beiges, muted browns, and hints of ochre, evoking a sense of natural warmth and rustic elegance. The uneven spacing and varying thickness of the stripes create visual interest, while the textural detail enhances depth and richness.



Srshti Ekam

WIDTH
300 CMS (118")

WEIGHT
125 GSM

COMPOSITION
70%POLY. 30%COTT.

SRE : 06

END USE
CURTAIN,UPHOLSTERY

CARE INSTRUCTION
Ⓟ

Page : 22

TISSUE

Colour may vary from dye lot to dye lot



SRSHTI EKAM

WIDTH
140 CMS (54")

WEIGHT
330 GSM

COMPOSITION
100% POLYESTER

END USE
CURTAIN, UPHOLSTERY

CARE INSTRUCTION
Ⓟ

SRE : 12

Page : 23

JUTE

Colour may vary from dye lot to dye lot



SRSHTI EKAM

WIDTH
140 CMS (54")

WEIGHT
355 GSM

COMPOSITION
100% POLYESTER

SRE : 04

END USE
CURTAIN,UPHOLSTERY

CARE INSTRUCTION
Ⓟ

Page : 24

HEMP

Colour may vary from dye lot to dye lot



VANN

WIDTH
140 CMS (54")

WEIGHT
218 GSM

COMPOSITION
60%POLY. 30%COTT. 10% LIN.

VAN : 15

END USE
CURTAIN,UPHOLSTERY

CARE INSTRUCTION
Ⓟ

Page : 25

PALM

Colour may vary from dye lot to dye lot



VANN

WIDTH
140 CMS (54")

WEIGHT
218 GSM

COMPOSITION
60%POLY. 30%COTT. 10% LIN.

VAN : 16

END USE
CURTAIN,UPHOLSTERY

CARE INSTRUCTION
Ⓟ

Page : 26

PALM

Colour may vary from dye lot to dye lot



VANN

WIDTH
140 CMS (54")

WEIGHT
315 GSM

COMPOSITION
100% POLYESTER

VAN : 17

END USE
CURTAIN, UPHOLSTERY

CARE INSTRUCTION
Ⓟ

Page : 27

PALM

Colour may vary from dye lot to dye lot



SRSHTI

WIDTH
140 CMS (54")

WEIGHT
351 GSM

COMPOSITION
100% POLYESTER

END USE
CURTAIN,UPHOLSTERY

CARE INSTRUCTION
Ⓟ

SRS : 17

Page : 28

WOOL

Colour may vary from dye lot to dye lot



VANN

WIDTH
140 CMS (54")

WEIGHT
450 GSM

COMPOSITION
100% POLYESTER

END USE
CURTAIN, UPHOLSTERY

CARE INSTRUCTION
Ⓟ

VAN : 18

Page : 29

ORCHARD

Colour may vary from dye lot to dye lot



VANN

WIDTH
140 CMS (54")

WEIGHT
351 GSM

COMPOSITION
100% POLYESTER

END USE
CURTAIN, UPHOLSTERY

CARE INSTRUCTION
Ⓟ

VAN : 19

Page : 30

HORIZON

Colour may vary from dye lot to dye lot



VANN

WIDTH
140 CMS (54")

WEIGHT
351 GSM

COMPOSITION
100% POLYESTER

VAN : 20

END USE
CURTAIN, UPHOLSTERY

CARE INSTRUCTION
Ⓟ

Page : 31

HORIZON

Colour may vary from dye lot to dye lot



VANN

WIDTH
140 CMS (54")

WEIGHT
315 GSM

COMPOSITION
100% POLYESTER

END USE
CURTAIN, UPHOLSTERY

CARE INSTRUCTION
Ⓟ

VAN : 21

Page : 32

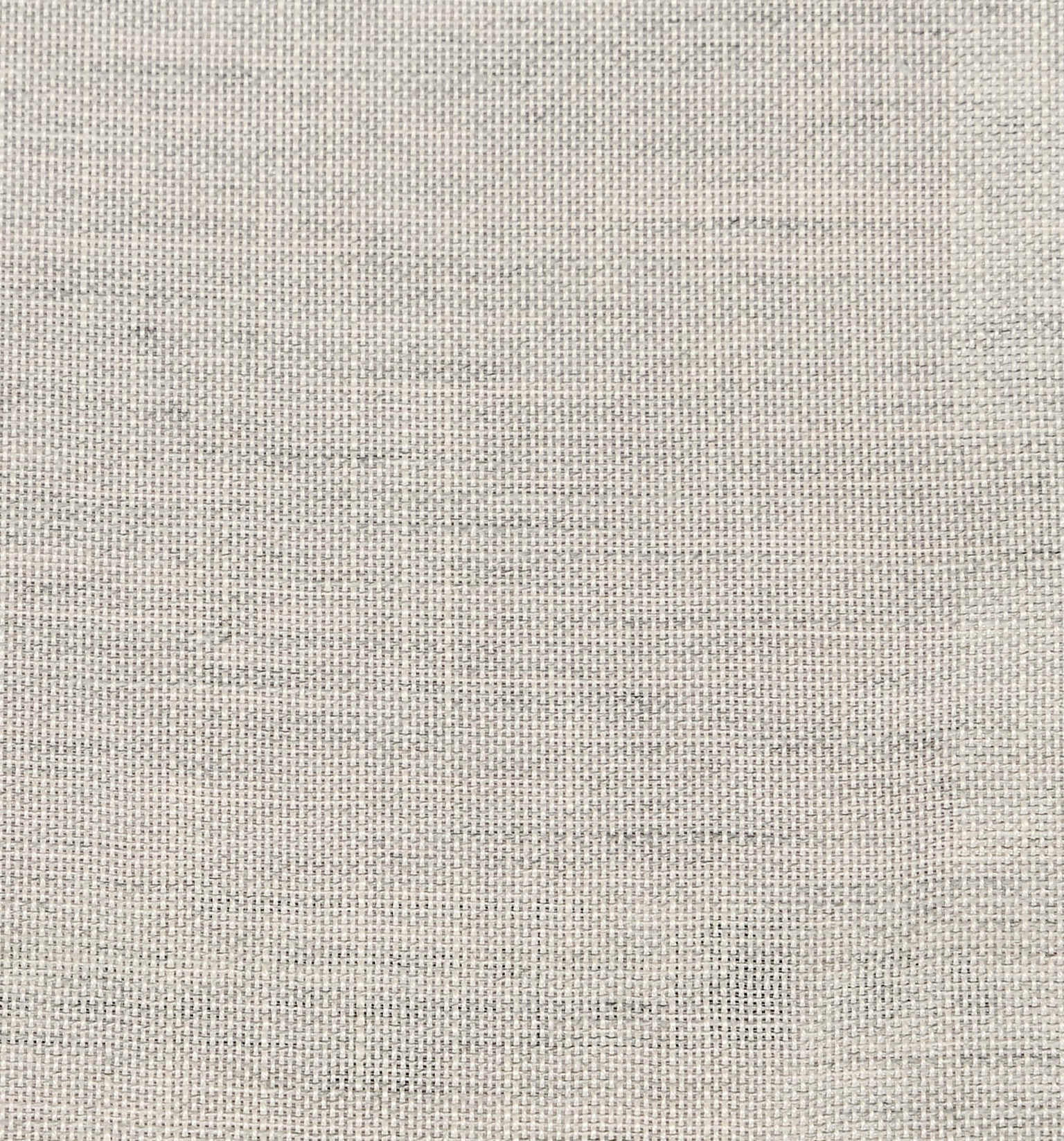
ARCADIA

Colour may vary from dye lot to dye lot



HORIZON

This geometric pattern features a harmonious arrangement of semi-circular, scalloped shapes that cascade vertically in continuous, rhythmic rows. The design is characterized by a soft, earthy palette of greens, blues, and muted golds, with subtle tonal variations that give the pattern a sense of depth and texture. The overlapping half-moon shapes are organized with precision, creating a visual interplay between curved forms and vertical alignment. The linen-like texture subtly embedded within the design adds a tactile, woven quality, enhancing its organic and grounded feel.



SRSHTI

WIDTH
300 CMS (118")

WEIGHT
177 GSM

COMPOSITION
100% POLYESTER

SRS : 33

END USE
CURTAIN

CARE INSTRUCTION
Ⓟ

Page : 33

MIRAGE

Colour may vary from dye lot to dye lot

SRSHTI EKAM

WIDTH
140 CMS (54")

WEIGHT
366 GSM

COMPOSITION
60%POLY. 30%COTT. 10% LIN.

SRE : 05

END USE
CURTAIN,UPHOLSTERY

CARE INSTRUCTION
Ⓟ

Page : 34

LINEN

SRSHTI EKAM

WIDTH
140 CMS (54")

WEIGHT
330 GSM

COMPOSITION
100% POLYESTER

END USE
CURTAIN, UPHOLSTERY

CARE INSTRUCTION
Ⓟ

SRE : 37

Page : 35

JUTE



VANN

WIDTH
140 CMS (54")

WEIGHT
218 GSM

COMPOSITION
60%POLY. 30%COTT. 10% LIN.

VAN : 22

END USE
CURTAIN, UPHOLSTERY

CARE INSTRUCTION
Ⓟ

Page : 36

PALM

Colour may vary from dye lot to dye lot



VANN

WIDTH
140 CMS (54")

WEIGHT
218 GSM

COMPOSITION
60%POLY. 30%COTT. 10% LIN.

VAN : 23

END USE
CURTAIN,UPHOLSTERY

CARE INSTRUCTION
Ⓟ

Page : 37

PALM

Colour may vary from dye lot to dye lot



SRSHTI

WIDTH
140 CMS (54")

WEIGHT
351 GSM

COMPOSITION
100% POLYESTER

END USE
CURTAIN,UPHOLSTERY

CARE INSTRUCTION
Ⓟ

SRS : 14

Page : 38

WOOL

Colour may vary from dye lot to dye lot



SRSHTI

WIDTH
140 CMS (54")

WEIGHT
351 GSM

COMPOSITION
100% POLYESTER

END USE
CURTAIN, UPHOLSTERY

CARE INSTRUCTION
Ⓟ

SRS : 32

Page : 39

WOOL

Colour may vary from dye lot to dye lot



VANN

WIDTH
140 CMS (54")

WEIGHT
351 GSM

COMPOSITION
100% POLYESTER

VAN : 24

END USE
CURTAIN, UPHOLSTERY

CARE INSTRUCTION
Ⓟ

Page : 40

HORIZON

Colour may vary from dye lot to dye lot



VANN

WIDTH
140 CMS (54")

WEIGHT
315 GSM

COMPOSITION
100% POLYESTER

END USE
CURTAIN, UPHOLSTERY

CARE INSTRUCTION
Ⓟ

VAN : 25

Page : 41

ARCADIA

Colour may vary from dye lot to dye lot



VANN

WIDTH
140 CMS (54")

WEIGHT
351 GSM

COMPOSITION
100% POLYESTER

END USE
CURTAIN, UPHOLSTERY

CARE INSTRUCTION
Ⓟ

VAN : 26

Page : 42

ARCADIA

Colour may vary from dye lot to dye lot



VANN

WIDTH
140 CMS (54")

WEIGHT
450 GSM

COMPOSITION
100% POLYESTER

VAN : 27

END USE
CURTAIN, UPHOLSTERY

CARE INSTRUCTION
Ⓟ

Page : 43

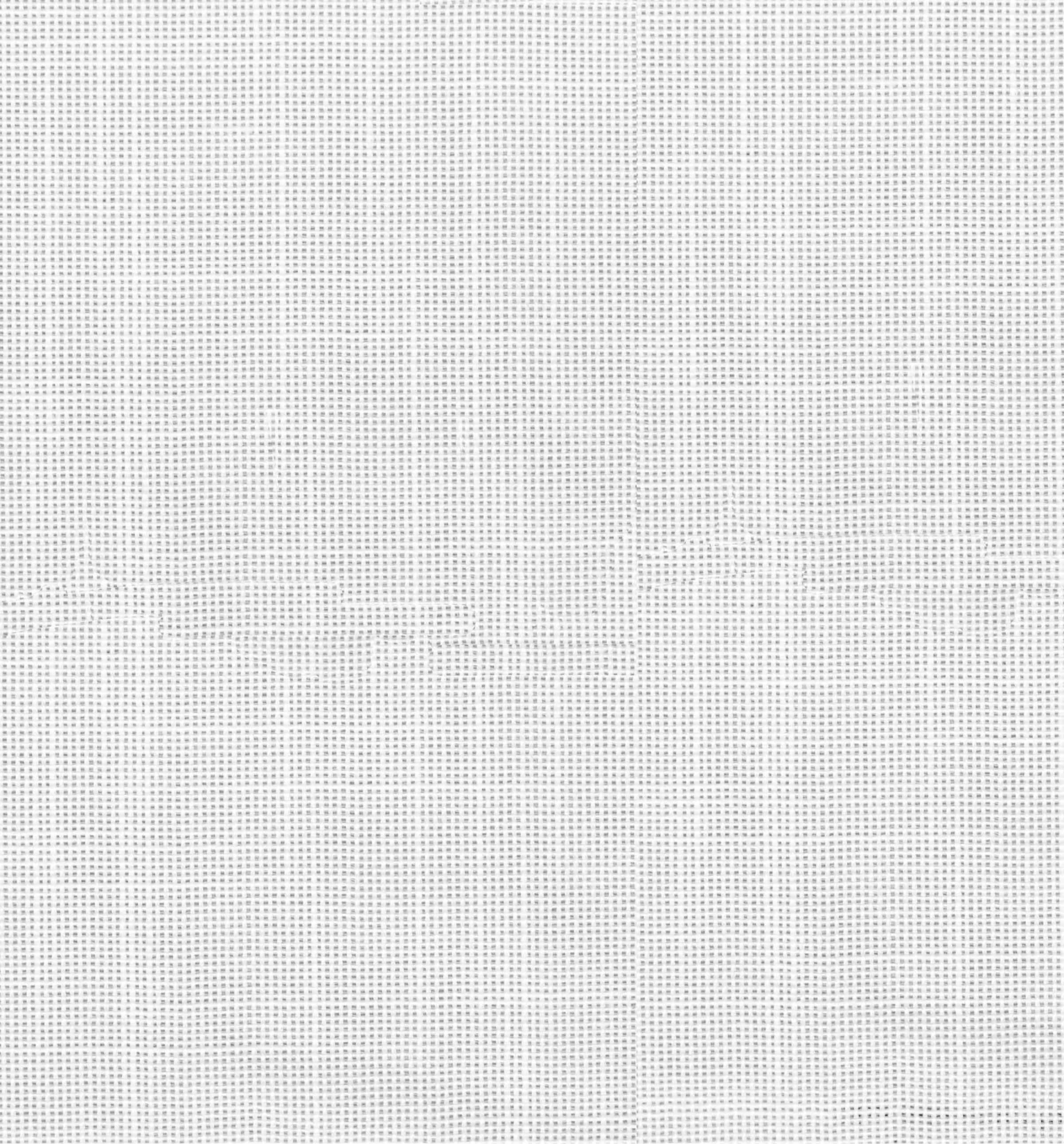
ORCHARD

Colour may vary from dye lot to dye lot

ORCHARD

This elegant botanical design showcases a harmonious pattern of fruits, leaves, and branches, rendered in soft, earthy beige and taupe tones. The motif features detailed depictions of pomegranates, pinecones, and stylized floral clusters intertwined with flowing vines and delicately textured leaves. The subtle tonal contrasts give the design a hand-drawn, organic look, enhancing its refined, nature-inspired appeal.





SRSHTI



WIDTH
300 CMS (118")

WEIGHT
177 GSM

COMPOSITION
100% POLYESTER

SRS : 30

END USE
CURTAIN

CARE INSTRUCTION
Ⓟ

Page : 44

MIRAGE

Colour may vary from dye lot to dye lot

SRSHTI

WIDTH
140 CMS (54")

WEIGHT
218 GSM

COMPOSITION
60%POLY. 30%COTT. 10% LIN.

SRE : 08

END USE
CURTAIN,UPHOLSTERY

CARE INSTRUCTION
Ⓟ

Page : 45

KHADI



SRSHTI

WIDTH
140 CMS (54")

WEIGHT
366 GSM

COMPOSITION
60%POLY. 30%COTT. 10% LIN.

SRE : 05

END USE
CURTAIN,UPHOLSTERY

CARE INSTRUCTION
Ⓟ

Page : 46

LINEN

Colour may vary from dye lot to dye lot



VANN

WIDTH
140 CMS (54")

WEIGHT
218 GSM

COMPOSITION
60%POLY. 30%COTT. 10% LIN.

VAN : 28

END USE
CURTAIN,UPHOLSTERY

CARE INSTRUCTION
Ⓟ

Page : 47

PALM

Colour may vary from dye lot to dye lot



VANN

WIDTH
140 CMS (54")

WEIGHT
315 GSM

COMPOSITION
100% POLYESTER

END USE
CURTAIN, UPHOLSTERY

CARE INSTRUCTION
Ⓟ

VAN : 29

Page : 48

ARCADIA

Colour may vary from dye lot to dye lot



VANN

WIDTH
140 CMS (54")

WEIGHT
315 GSM

COMPOSITION
100% POLYESTER

VAN : 30

END USE
CURTAIN, UPHOLSTERY

CARE INSTRUCTION
Ⓟ

Page : 49

ARCADIA

Colour may vary from dye lot to dye lot



VANN

WIDTH
140 CMS (54")

WEIGHT
351 GSM

COMPOSITION
100% POLYESTER

VAN : 31

END USE
CURTAIN, UPHOLSTERY

CARE INSTRUCTION
Ⓟ

Page : 50

HORIZON

Colour may vary from dye lot to dye lot



VANN

WIDTH
140 CMS (54")

WEIGHT
351 GSM

COMPOSITION
100% POLYESTER

VAN : 32

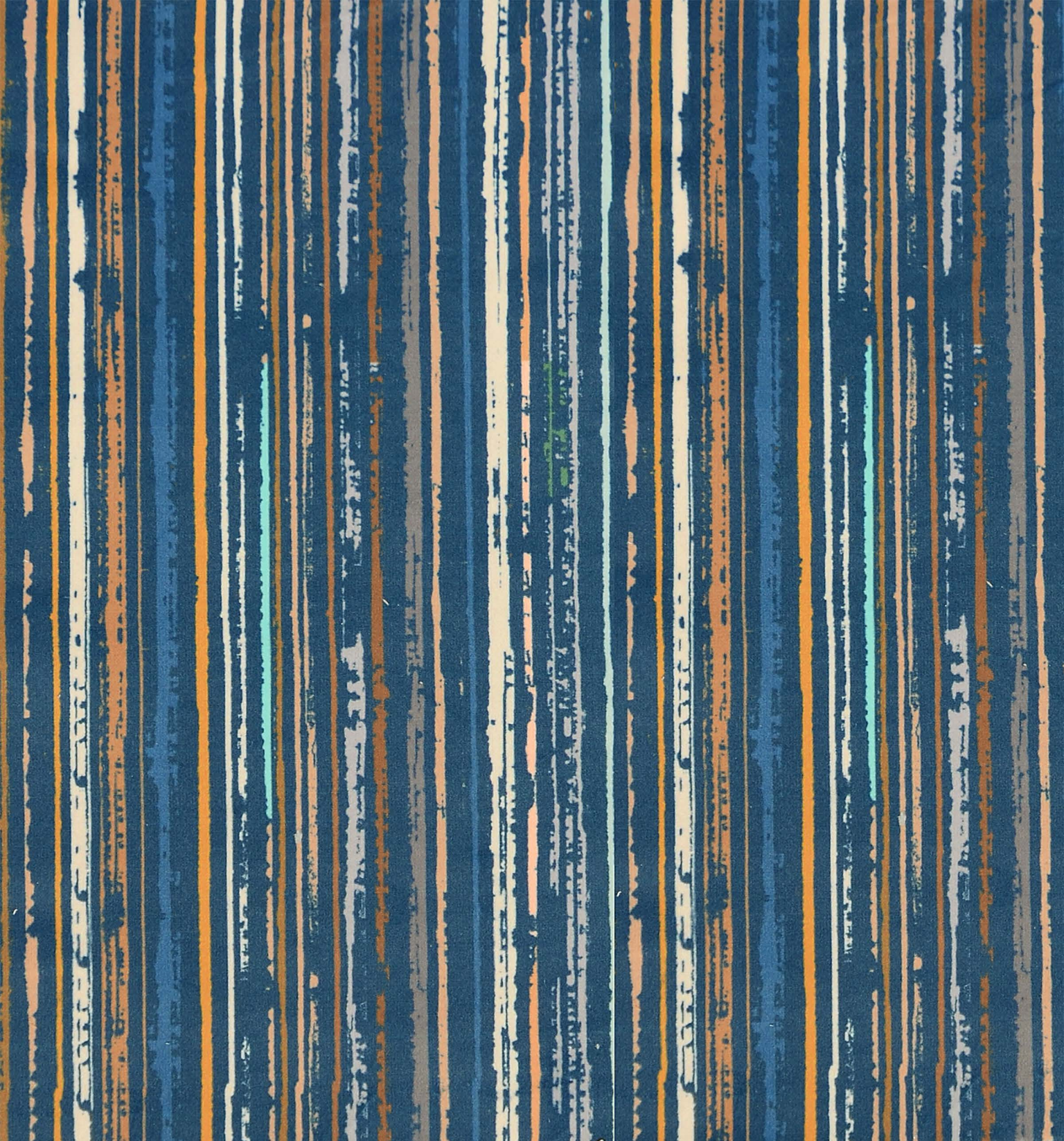
END USE
CURTAIN, UPHOLSTERY

CARE INSTRUCTION
Ⓟ

Page : 51

HORIZON

Colour may vary from dye lot to dye lot



VANN

WIDTH
140 CMS (54")

WEIGHT
315 GSM

COMPOSITION
100% POLYESTER

VAN : 33

END USE
CURTAIN, UPHOLSTERY

CARE INSTRUCTION
Ⓟ

Page : 52

ARCADIA

Colour may vary from dye lot to dye lot



SRSHTI

WIDTH
140 CMS (54")

WEIGHT
351 GSM

COMPOSITION
100% POLYESTER

END USE
CURTAIN, UPHOLSTERY

CARE INSTRUCTION
Ⓟ

SRS : 38

Page : 53

WOOL

Colour may vary from dye lot to dye lot



VANN

WIDTH
140 CMS (54")

WEIGHT
450 GSM

COMPOSITION
100% POLYESTER

END USE
CURTAIN, UPHOLSTERY










CARE INSTRUCTION
Ⓟ

VAN : 34

Page : 54

ORCHARD

Colour may vary from dye lot to dye lot

DESIGN	PAGE NO.	WIDTH	COMPOSITION	GSM	CARE INSTRUCTION	END USE
PALM	04, 05, 12, 20, 21, 25, 26, 36, 37, 47	140 CMS (54")	60% POLY. 30% COTT. 10% LIN.	218	DRY CLEAN	
HORIZON	07, 09, 14, 15, 30, 31, 40, 42, 50, 51	140 CMS (54")	100% POLYESTER	351	DRY CLEAN	
ARCADIA	06, 08, 13, 27, 32, 41, 48, 49, 52	140 CMS (54")	100% POLYESTER	315	DRY CLEAN	
ORCHARD	11, 16, 29, 43, 54	140 CMS (54")	100% POLYESTER	450	DRY CLEAN	
WOOL	10, 28, 38, 39, 53	140 CMS (54")	100% POLYESTER	351	DRY CLEAN	
MIRAGE	17, 33, 44,	300 CMS (118")	100% POLYESTER	177	DRY CLEAN	
TISSUE	01, 22	300 CMS (118")	70% POLY. 30% COTT.	125	DRY CLEAN	
JUTE	23, 35,	140 CMS (54")	100% POLYESTER	330	DRY CLEAN	
LINEN	34, 46,	140 CMS (54")	60% POLY. 30% COTT. 10% LIN.	366	DRY CLEAN	
HEMP	02, 24,	140 CMS (54")	100% POLYESTER	355	DRY CLEAN	
KHADI	03, 18, 45,	140 CMS (54")	60% POLY. 30% COTT. 10% LIN.	218	DRY CLEAN	
CASHMERE	19	140 CMS (54")	100% POLYESTER	335	DRY CLEAN	

END USE



CURTAIN



LOOSE CUSHION



SOFA / UPHOLSTERY

Colour shades may vary from dye lot to dye lot